

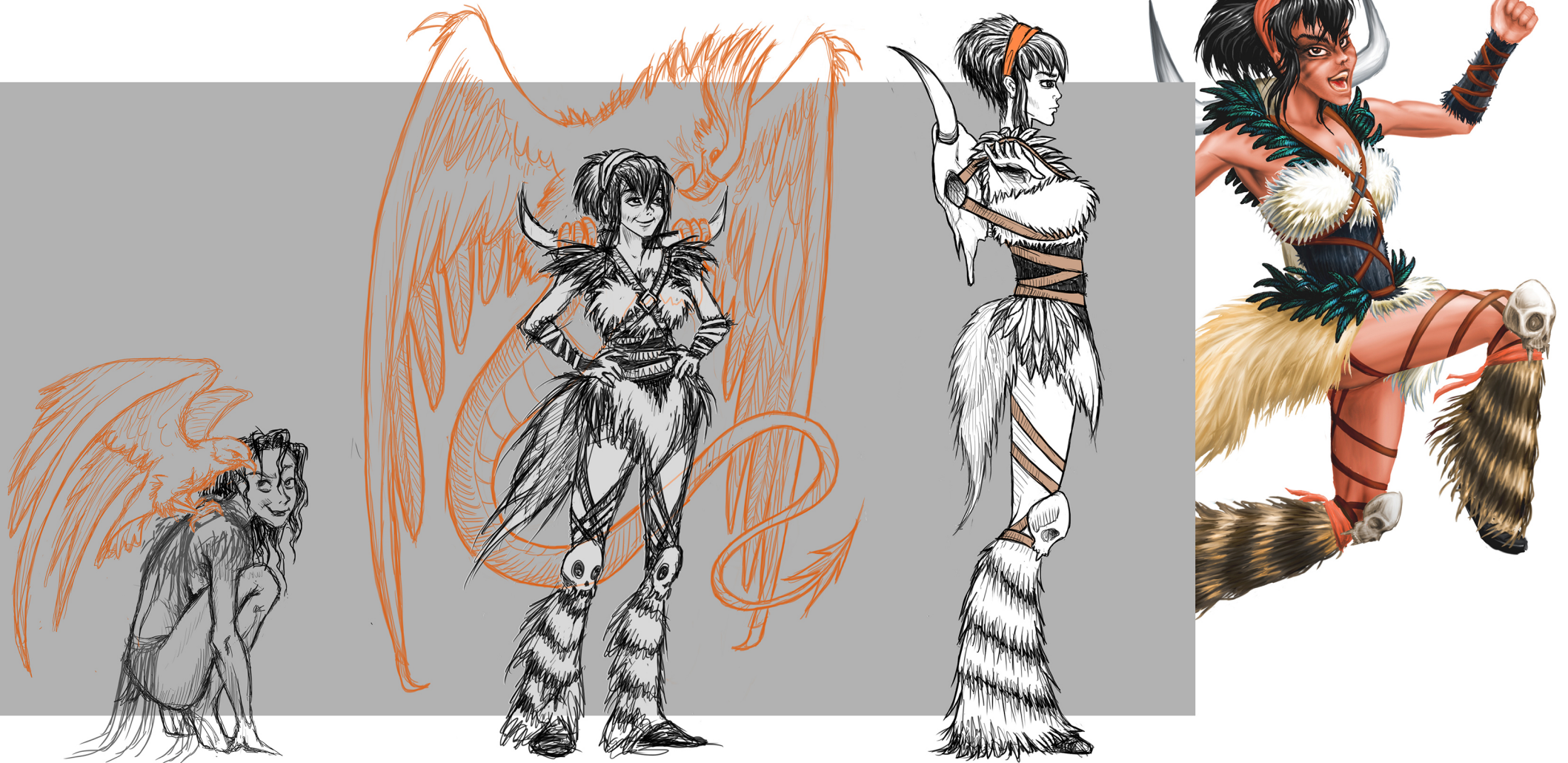
# CHARACTER DESIGN AND VISUAL DEVELOPMENT

FOR A SHORT I AM STORYBOARDING WITH VR IN MIND

SARA TERAMO, CREATIVE MA DESIGNER  
EAGER TO CONTRIBUTE TO UPCOMING PROJECTS

ADDING CONCEPT ART AND STORYBOARDING TO HER DESIGNER SKILLS

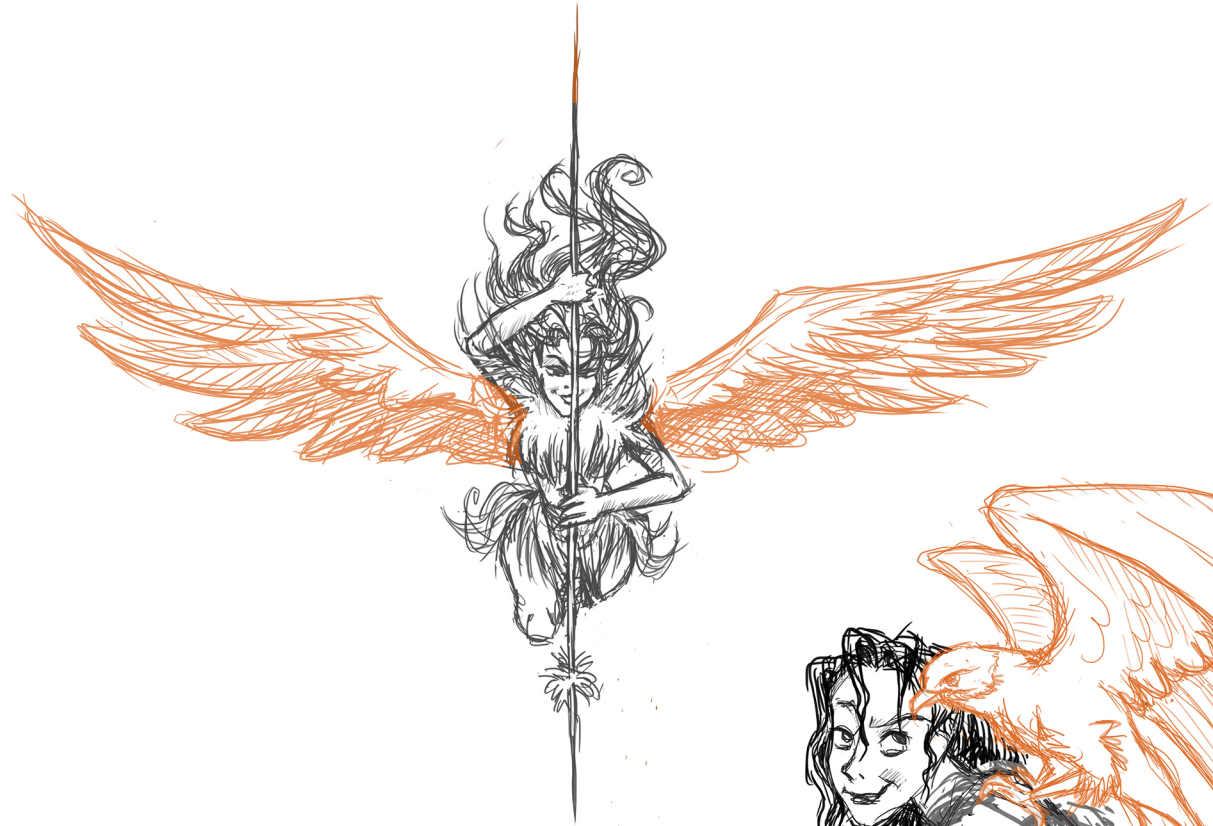
FOR MORE OF MY ART AND DESIGN WORK VISIT  
[CONCEPTSARA.COM](http://CONCEPTSARA.COM)



# INITIAL CHARACTER IDEA

SHE CAN FLY LIKE AN ANGEL

HER SECRET IS HER GIANT WINGED PET (ORIGINALLY A HAWK)  
INITIALLY, SHE HAD A MAORI INSPIRED STRAW COSTUME



THE GIANT BIRD RESPONDS TO HER CALL, GRABS HER AND LIFT HER HIGH INTO THE SKY



1 CALL

2 SPRINT

3 ENGAGE

4 TAKE OFF

I LIKED HER COSTUME AND HOW IT MOVED WITH THE WIND BUT I NEEDED A BETTER SOLUTION FOR THE BIRD TO LIFT HER BY IT.



# FINAL CHARACTER STUDIES

## FIGHT OR FLIGHT

I FINALLY MOVED TO A PELT AND FEATHERS COSTUME HELD BY LEATHER STRAPS WITH ANIMAL BONE ACCESSORIES



THE BULL'S SKULL STRAPPED AT HER BACK IS NOT JUST AN INTIMIDATING PROP:  
IT OFFERS A STURDY PERCH FOR HER WINGED PAL TO FLY HER AROUND AND IT CAN ALSO HOLD WEAPONS



FINALLY, THE GIANT BIRD IS A HYBRID BETWEEN AN EAGLE AND A REPTILE;

ONE OF THE MANY BIZARRE CREATURES INHABITING THE FANTASTIC PREHISTORIC WORLD OUR MAIN CHARACTER IS EXPLORING





# CHARACTER TURNAROUND

## AND MATERIAL REFERENCES

IN HER WORLD ALL ANIMALS ARE FICTIONAL BUT REAL WORLD REFERENCES ARE USED

HER WINGED PAL CARRIES HER BY THE HORNS OF THE SKULL, WHICH IS STRAPPED TO HER BACK WITH ONE LONG LEATHER STRAP

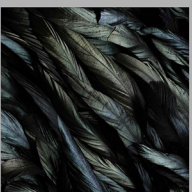
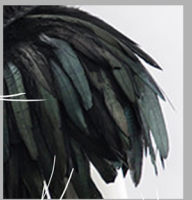
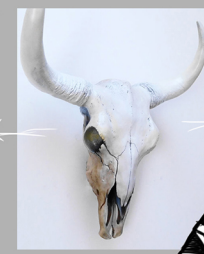
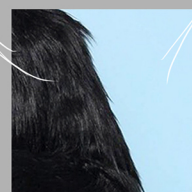
YOU CAN SEE THE STRAP CROSSING ON HER CHEST AND INSIDE THE SKULL'S EYE SOCKETS AND CONTINUES DOWN WRAPPING AROUND HER WAIST, LOWER BODY AND LEGS

THIS WAY THE PRESSURE OF THE BELT IS DISTRIBUTED MORE EVENLY ALONG HER BODY, WHEN SHE IS LIFTED BY THE SKULL'S HORNS

IN THIS FANTASTIC PRIMITIVE WORLD FULL OF OVERSIZED AND MUTATED CREATURES, SHE IS ONE OF THE FEW SURVIVING HUMANS AND THE BOTTOM OF THE FOOD CHAIN

SHE LIVES AS A SCAVENGER WITH HER FLYING FRIEND.

HER OUTFIT NEEDS TO BE COMFORTABLE BUT ALSO LIGHT AND AGILE



THE FUR ON HER BACK IS LONGER AND THICKER

IT MAKES HER LOOK LIKE AN ANIMAL, IT ALLOWS HER TO SIT EASILY ON ANY TERRAIN

THE FEATHERS CONTRIBUTE TO HER ANIMAL CAMOUFLAGE AND MAKE HER FRAME LOOK BIGGER TO POTENTIAL ATTACKERS

THEY ALSO HELP HER GAUGE HER SPEED BETTER WHEN IN FLIGHT



# CONCEPT PAINTING AND SKETCHES

CHANNELING HER WILD SIDE

IN THIS VIRTUAL WORLD  
OUR CHARACTER CAN HUNT  
AND BE HUNTED

SHE CAN EVEN ATTEMPT A  
"LEAP OF FAITH"  
KNOWING THAT HER WINGED  
FRIEND WILL COME AND  
CATCH HER BEFORE SHE  
HITS THE GROUND

## COLOR PALETTES



SHE WILL BE FLYING  
LIKE USING A GLIDER,  
OR RIDE HER PET  
LIKE A PEGASUS

BOTH CAN BE  
EXHILARATING VR  
EXPERIENCES



SHE CAN CARRY  
TWO SWORDS AND

KEEP THEM IN THE  
SKULL ON HER BACK

